



西大和学園高等学校  
Nishiyamato Gakuen

SENIOR HIGH SCHOOL

ENTRANCE EXAMINATION

2021 SCHOOL YEAR

KANSAI

## GRAMMAR AND READING SECTION

Student Name: \_\_\_\_\_

Applicant Number: \_\_\_\_\_



## CONTENTS

This booklet contains the following sections:

|                       |  |              |            |
|-----------------------|--|--------------|------------|
| Section 1             | Error identification                     | 15 Questions | 40 minutes |
| Section 2             | Choosing the appropriate words           | 15 Questions |            |
| Section 3             | Choosing the best response to the prompt | 10 Questions |            |
| Reading Comprehension | Reading A                                | 5 Questions  |            |
|                       | Reading B                                | 5 Questions  |            |

If anything is missing, please inform the examiner *immediately*.

THIS  
PAGE  
INTENTIONALLY  
LEFT  
BLANK

## Section 1: Error identification

### INSTRUCTIONS

Find the mistakes in the following sentences.

If there is no mistake, choose option d) (no mistake).

Only ONE answer will be accepted.

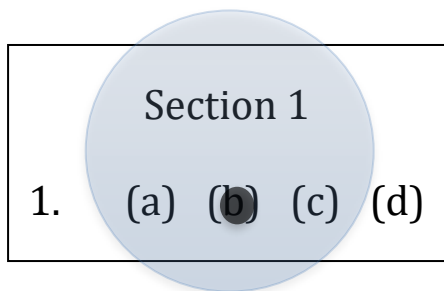
If two or more answers are chosen for a question, ZERO points will be given for that question.

e.g. 'Everyone knows that Osaka is more smaller than Tokyo.'

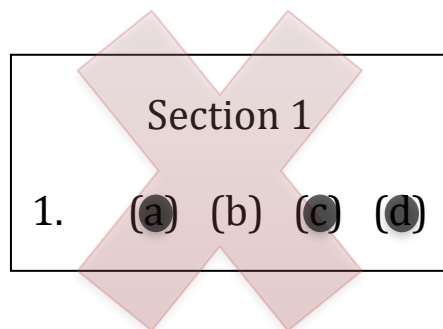
- a) Everyone knows
- b) more smaller
- c) than Tokyo
- d) no mistake

The answer is b (more smaller).

Mark your answer on the sheet provided as indicated below (on the left).



THE CORRECT WAY  
FULL points



THE INCORRECT WAY  
ZERO points

If you have a problem, please ask for help.

1) Your not going to be able to go to America this year because of travel restrictions.

- a) Your
- b) to be able to
- c) because of
- d) no mistake

2) Who's bicycle has been left in front of the school gymnasium?

- a) Who's
- b) has been left
- c) in front of
- d) no mistake

3) The Tokyo 2020 Olympics Games have been postponed because of the global COVID-19 pandemic.

- a) have been
- b) postponed
- c) because of
- d) no mistake

4) There aren't many students from Hyogo in the competition this year, aren't there?

- a) many students
- b) in the competition
- c) aren't there
- d) no mistake

5) The day after tomorrow, I'll be traveling with my family to visit my grandparents in Hiroshima.

- a) The day after tomorrow
- b) be traveling with
- c) to visit my
- d) no mistake

## Section 1: Error identification

6) The baseball team is going to have to play a lot better then they did today.

- a) is going to
- b) have to
- c) a lot better then
- d) no mistake

7) My mother had me clean my bedroom before our relatives visited our home.

- a) had me
- b) before our relatives
- c) visited our home
- d) no mistake

8) The teacher on the right is my most favorite teacher in the entire school.

- a) on the right
- b) most favorite
- c) the entire school
- d) no mistake

9) My friends couldn't get the bags because they misplaced there locker keys.

- a) couldn't get
- b) because they misplaced
- c) there locker keys
- d) no mistake

10) There was a considerable amount of anxiety caused by the typhoon approaching the city.

- a) a considerable amount
- b) anxiety caused by
- c) approaching the city
- d) no mistake

11) My family wasn't effected by the earthquake because we were overseas at the time.

- a) wasn't effected
- b) we were overseas
- c) at the time
- d) no mistake

12) We don't have enough time to complete all the homeworks assigned to us by our teachers.

- a) don't have enough
- b) all the homeworks
- c) assigned to us
- d) no mistake

13) The teachers were bewildered by the unusually low test scores from the best student in the class.

- a) were bewildered
- b) unusually low test scores
- c) the best student
- d) no mistake

14) It is a commonly accepted fact that washing your hands is a good way to procure the spread of disease.

- a) commonly accepted fact
- b) washing your hands
- c) procure the spread of disease
- d) no mistake

15) The Japanese Prime Minister, Yoshihide Suga, was born to a family of strawberry farmers in Akita.

- a) The Japanese Prime Minister
- b) was born to a
- c) of strawberry farmers in Akita
- d) no mistake

## Section 2: Choosing the appropriate words

### INSTRUCTIONS

Choose the appropriate word(s) to fill in the blanks in the following sentences.

Only ONE answer will be accepted.

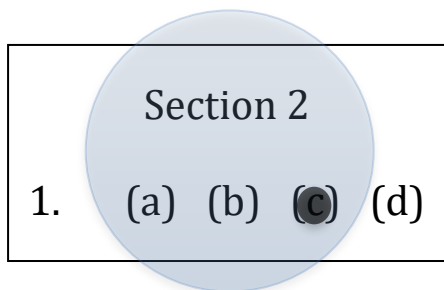
If two or more answers are chosen for a question, ZERO points will be given for that question.

e.g. 'Everyone knows that Osaka is \_\_\_\_\_ Tokyo.'

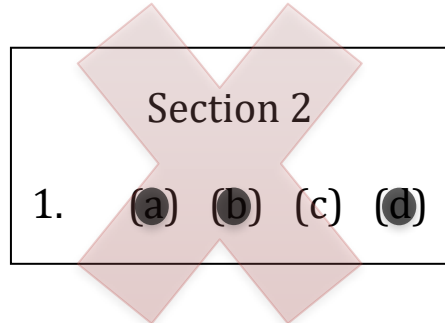
- a) not bigger as
- b) not same
- c) smaller than
- d) more small than

The answer is c (smaller than).

Mark your answer on the sheet provided as indicated below (on the left).



THE CORRECT WAY  
FULL points



THE INCORRECT WAY  
ZERO points

If you have a problem, please ask for help.

1) Our school trip to the US has been cancelled \_\_\_\_\_ the coronavirus.

- a) because
- b) due to
- c) regardless of
- d) irrespective of

2) \_\_\_\_\_ of the flat tire, we rode our bicycle all the way home.

- a) Although
- b) Despite
- c) In spite
- d) In case

3) Joe Biden \_\_\_\_\_ 46<sup>th</sup> President of the United States of America.

- a) has become
- b) was elected to the office of
- c) assumed the office of
- d) is now the

4) In 2020, COVID-19 \_\_\_\_\_ the lives of everyone in the world.

- a) disrupted
- b) deviated
- c) demonstrated
- d) dramatically affect

5) South Africa \_\_\_\_\_ the 9<sup>th</sup> Rugby World Cup in 2019, hosted by Japan.

- a) successfully accomplished
- b) is the winner
- c) was the nation that won
- d) has attained

## Section 2: Choosing the appropriate words

6) I will be allowed to go on the school trip \_\_\_\_\_ I get permission from my parents.

- a) unless
- b) although
- c) as long as
- d) in case

7) The \_\_\_\_\_ recorded in Japan, occurred in 2011.

- a) most biggest earthquake
- b) earthquake that was largest size
- c) powerful magnitude earthquake
- d) most powerful earthquake ever

8) Harvard University is \_\_\_\_\_ one of the most prestigious universities in the world.

- a) considered not as
- b) thought by most people
- c) generally regarded as
- d) said by many people

9) Hideki Yukawa was the first Japanese citizen \_\_\_\_\_ the Nobel Prize.

- a) to be awarded
- b) to have acceded
- c) to be elected
- d) to ascertain

10) Nishiyamato Gakuen \_\_\_\_\_ from Oji station in Nara prefecture.

- a) takes 5 minutes by taxi to
- b) is located a short bus ride away
- c) is situated around
- d) a short distance

11) The \_\_\_\_\_ the students in her class made it difficult for the teacher to manage the lesson.

- a) disparity in English skills among
- b) language skill differential
- c) good attitudes and behavior of
- d) plagiarism of articles from the internet between

12) English is confusing because \_\_\_\_\_ variety of other languages such as Latin and Greek.

- a) its origins are a mixture of
- b) its roots come from a
- c) the words are from
- d) the words are derived

13) I know someone \_\_\_\_\_ architect at that company.

- a) whose father is a
- b) whose mother is an
- c) who's related to a
- d) who's cousin is an

14) Bitcoin is a digital currency that works without banks or administrators. In 2017, the value of this currency \_\_\_\_\_. Despite this, overall its value has risen considerably.

- a) has dropped in value, and is expected to continue dropping in value
- b) grew in value steadily
- c) fluctuated wildly throughout the year
- d) has increased in value dramatically

15) Edward Snowden has been \_\_\_\_\_ from the US Justice Department since 2013.

- a) a modern-day folk hero
- b) a fugitive
- c) a plaintiff
- d) a criminal element

## Section 3: Choosing the best response to the prompt

### INSTRUCTIONS

Choose the best response to the prompt.

Only ONE answer will be accepted.

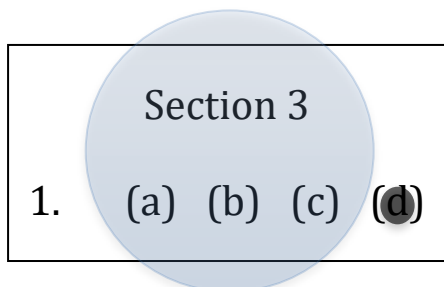
If two or more answers are chosen for a question, ZERO points will be given for that question.

e.g. 'Which city is bigger, Osaka or Tokyo?'

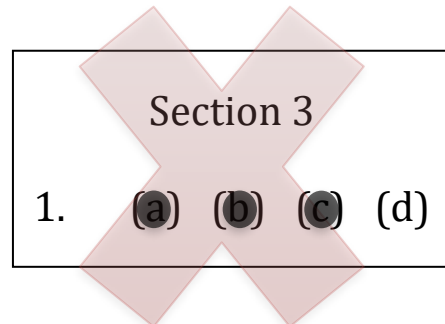
- a) Osaka is not as big as New York.
- b) The city is bigger.
- c) Osaka and Tokyo are bigger than Nagoya.
- d) Tokyo is bigger than Osaka.

The answer is d (Tokyo is bigger than Osaka).

Mark your answer on the sheet provided as indicated below (on the left).



THE CORRECT WAY  
FULL points



THE INCORRECT WAY  
ZERO points

If you have a problem, please ask for help.

1) When do you study English?

- a) I study at my free time.
- b) I studied in school yesterday.
- c) Twice a week on various days.
- d) I am studying on everyday.

2) I'm sure that the student gave the wrong answer to that question.

- a) I was wrong to doubt the student.
- b) I have answered the wrong student.
- c) Why are you so sure he made a mistake?
- d) He wasn't on the right, was he?

3) How long will it take for you to finish all of your homework assignments?

- a) I'm not sure how long it will take.
- b) The deadline is next Thursday.
- c) Our teacher didn't tell us when it was due.
- d) I was assigned the homework a couple of weeks ago.

4) Could you give me the directions to the nearest bank?

- a) Go straight ahead for a couple of blocks. You'll see the post office on your left.
- b) I'm not really sure. Let me ask my friend – I'm sure he'll know where it is.
- c) My office is very close to where we are now.
- d) The directions will be sent to your bank soon.

5) Global warming deniers have long-claimed that there is some sort of conspiracy to falsify scientific result and climate is just a hoax.

- a) They think that their claims will support the conspiracy and prove the existence of climate change.
- b) Despite this, an overwhelming majority of scientists believe there is man-made climate change now.
- c) Conspiracy theorists have agreed to the validity of the scientific evidence about climate change.
- d) The hoaxes are proof that climate change is a real scientific phenomenon.

6) Nishiyamato Gakuen is a high school that has sent many students to Kyoto University.

- a) Kyoto University doesn't have very many students who used to be students at Nishiyamato Gakuen.
- b) They send more students there than many other schools in Japan.
- c) Many Kyoto University students also go to Nishiyamato Gakuen at the same time.
- d) Students aren't eligible to enroll at Kyoto University after attending Nishiyamato Gakuen.

7) Japan's large elderly population is going to cause huge problems for the pension system soon.

- a) It's entirely possible that it will become bankrupt because there are too many elderly people.
- b) Huge pensions for overweight elderly people is costing the government too much money.
- c) There aren't enough elderly people to receive the pension money from the government.
- d) There are enough young people to sustain the budget for the pension indefinitely.

8) JFK was one of the most popular American presidents of the 20<sup>th</sup> century, inspiring many to enter public life with service with his views on equality. Unfortunately, he was assassinated before he completed his first term.

- a) The 20<sup>th</sup> century was very chaotic, so his assassination was predictable.
- b) If he had been more popular, he might have completed a second term.
- c) He undertook many policies that made people angry, despite his popularity.
- d) He wouldn't have been re-elected for a second term because of his unpopularity.

9) The first submarine used for military purposes was built in 1776 and against the British during the American Revolution. It was a single-occupant hand-powered wooden vehicle called the "Turtle", and was designed to covertly place explosives on ships.

- a) It was propelled by steam.
- b) It required three people inside to operate safely for covert operations.
- c) The design was based on the British Navy submarine used during the Battle of Quiberon Bay.
- d) Like its namesake, it could operate above and under water.

10) The Dunning-Kruger effect is a cognitive bias in which people overestimate their own ability in a specific area because a lack of self-awareness prevents them from being objective. It results in a "double curse"; people perform poorly and are also not self-aware enough to judge themselves accurately—and are thus unlikely to learn and grow.

- a) It is very important to have a reasonable estimation of your own abilities before learning and growth.
- b) Consequentially, this lack of self-awareness helps people overcome their inability to learn and grow.
- c) So, by underestimating their own ability, people can become more self-aware.
- d) This cognitive bias results in people performing better in real life.

THIS  
PAGE  
INTENTIONALLY  
LEFT  
BLANK

# Reading Comprehension

## INSTRUCTIONS

Read the passages carefully and answer the questions on the following page.

Only ONE answer will be accepted.

If two or more answers are chosen for a question, ZERO points will be given for that question.

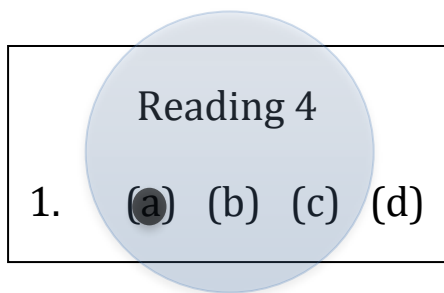
1 Osaka is a large city about 500 kilometers from Tokyo. It is bigger than other cities in the region but it still is much smaller than Tokyo.

e.g. 'Which sentence best summarizes the content of the passage?'

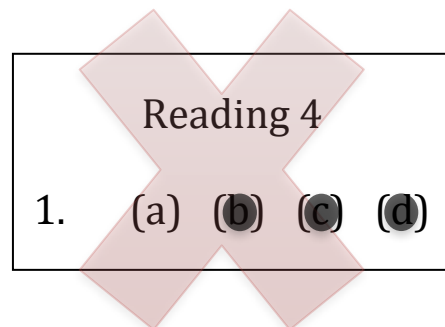
- a) Osaka is a large city in Japan, but it is smaller than Tokyo.
- b) Cities in Japan are large.
- c) Tokyo is a wonderful city.
- d) Osaka isn't particularly far from Tokyo.

The answer is a (Osaka is a large city in Japan, but it is smaller than Tokyo).

Mark your answer on the sheet provided as indicated below (on the left).



THE CORRECT WAY  
FULL points



THE INCORRECT WAY  
ZERO points

If you have a problem, please ask for help.

THIS  
PAGE  
INTENTIONALLY  
LEFT  
BLANK

# Reading A

## The Life of Franz Kafka

*Each paragraph below is numbered for your convenience.*

1. Franz Kafka - a writer from the Czech Republic - was a writer in the German language whose short life spanned the late nineteenth and early twentieth centuries. Many of his works have been translated into other languages. He has also inspired other works. For example, in 2002, Haruki Murakami's work of fiction entitled "Kafka on the Shore" included a main character named Kafka - perhaps a reference to Franz Kafka. Generally speaking, Kafka's themes explore the human struggle to find a place in a complicated world of mysterious forces. The word "Kafkaesque" was invented to refer to this.
2. Kafka's life was not a happy one for many reasons. As a Jewish person, he did not feel connected to the German community in which he lived. Also, as a modern-thinker, he did not fit in well with conservative Jewish tradition. He had a stormy relationship with his overbearing father, and he also had many health issues - both physical and psychological. Perhaps literature and the world of imagination was an escape for Kafka.
3. Kafka was a prolific writer. He wrote novels and short stories. "Metamorphosis," a short story, is his most famous work, and it is still taught today in schools all over the world. In this story, a young man changes overnight into a large beetle, and he must suffer the embarrassment and the aggression from his father as a result. Although it is in some ways a dark tale, Kafka intended for it to be a humorous work, and others said that when he read it aloud, everyone was laughing.
4. Kafka's legacy lives on until this day, but Kafka did not intend for this to be the case. He instructed his friend, Max Brod, to destroy any unpublished manuscripts. Kafka doubted his abilities and wanted his works to die with him. Fortunately, Brod did not follow these instructions, and after Kafka's death from tuberculosis, his works achieved worldwide fame. In 1988, a handwritten manuscript of his novel *The Trial* sold for nearly 2 million dollars - then, the highest sum paid for a modern manuscript at that time.

## Questions

1. What is the main purpose of the first paragraph?

- a) To explain why Kafka is unknown today
- b) To show Kafka's influence on Japanese literature
- c) To give a brief background of Kafka and his work
- d) None of the above

2. According to the second paragraph, which of the following is true?

- a) Kafka had emotional troubles, but he was physically healthy.
- b) Writing may have been a way for Kafka to deal with life's difficulties.
- c) Kafka had a warm family environment.
- d) All of the above.

3. According to the third paragraph, which of the following is false?

- a) Kafka thought "The Metamorphosis" was a funny story.
- b) "The Metamorphosis" was a true story.
- c) "The Metamorphosis" has not been forgotten.
- d) The main character in "The Metamorphosis" experiences a physical change.

4. In the final paragraph, which of the following best describes Max Brod's actions?

- a) Slightly dishonest, but ultimately helpful
- b) Motivated by a jealousy of Kafka's success
- c) Entirely useless but very kind
- d) Motivated by a desire to make money

5. Generally speaking, how does the reader feel about Kafka after this essay?

- a) Kafka lived a life full of many happy experiences.
- b) Kafka should be translated into English for the first time.
- c) Kafka had a difficult life, but he achieved success after death.
- d) Kafka's personal problems reduced the quality of his writing.

## Reading B

### The Modern Self-Help Movement

*Each paragraph below is numbered for your convenience.*

1. Are you at a difficult point in your career or relationship? Would you like to know more about obscure spiritual teachings, earn more money, or perhaps try to increase the level of happiness and calm in your life? If you answered "yes" to any of these questions, then a self-help book might be right for you. You can also get self-help advice in an audio format, or anywhere on the internet. Generally speaking, "self-help" is a strategy of self-guided improvement, usually using techniques or beliefs advocated by other people - perhaps groups such as Alcoholics Anonymous, leaders such as Anthony Robbins, or practices such as guided meditation.
2. Perhaps one of the most famous self-help leaders is Anthony Robbins. He is best known for his seminars and books - the most famous of which is *Awakening the Giant Within*. Much of his teaching has to do with the importance of setting clear personal goals - goals which align well with our deep desires. He describes how, despite personal setbacks, it is important to continue moving forward towards accomplishing life dreams. Tony Robbins is now a financial powerhouse - he has founded several companies which, combined, earn nearly 7 billion dollars annually. Eckhart Tolle is another contributor to the self-help movement. Although he might not describe himself as this, many of his fans use his books - particularly *The Power of Now* - to learn how to quiet their minds and find peace and inner power in the present moment. Tolle's company has also grown into a large money-making operation - offering retreats in exotic international locations, as well as books and audiobooks. He is often included in lists as one of the most powerful spiritual leaders in the world.
3. For as many people who are helped by self-help material, there are also those who are highly critical of its practices. They might even say that the only people who are helped by self-help gurus are the self-help gurus themselves, or that the only way to get rich from a self-help book is to write one. Perhaps this is harsh, but one of the criticisms of self-help, especially when it is centered on charismatic leaders, is that participants become so enamored of the speaker that they eventually cease to question his or her practices. Others say that certain problems, such as extreme poverty, cannot simply be overcome by thinking positively, repeating affirmations, or meditation. These critics advocate systematic changes to society rather relying on individual effort alone.
4. It cannot be denied, however, that self-help will continue to draw people, especially in an age when there are so many economic uncertainties and traditional religious beliefs that are beginning to disappear. Whether self-help can completely fix a problem is debatable, but perhaps hearing another's perspective on human challenges is a healthy thing if taken in moderation.

## Questions

1. Which of the following best describes this essay?
  - a) A highly critical account of America's self-help movement
  - b) A description of an especially helpful self-help technique
  - c) A brief overview of the self-help industry and attitudes towards it
  - d) An endorsement of self-help
  
2. Which of the following is the purpose of the first paragraph?
  - a) To define "self-help"
  - b) To describe why the author uses self-help
  - c) To describe the disadvantages of self-help
  - d) To describe misconceptions about self-help
  
3. Which of the following is mentioned in the second paragraph?
  - a) The early life of Anthony Robbins
  - b) One of Eckhart Tolle's biggest mistakes
  - c) The names of two books
  - d) None of the above
  
4. According to the third paragraph, which of the following is false?
  - a) Some people think that self-help is powerless to help certain people.
  - b) It is probably true that some self-help leaders are very rich.
  - c) Some people think that self-help leaders might have a negative influence.
  - d) Everyone thinks that the self-help industry is a positive thing.
  
5. Which of the following best describes the tone of the final paragraph?
  - a) Sarcastic
  - b) Cautious, yet hopeful
  - c) Entirely supportive
  - d) Confused

**END OF GRAMMAR AND READING SECTION**

THIS  
PAGE  
INTENTIONALLY  
LEFT  
BLANK